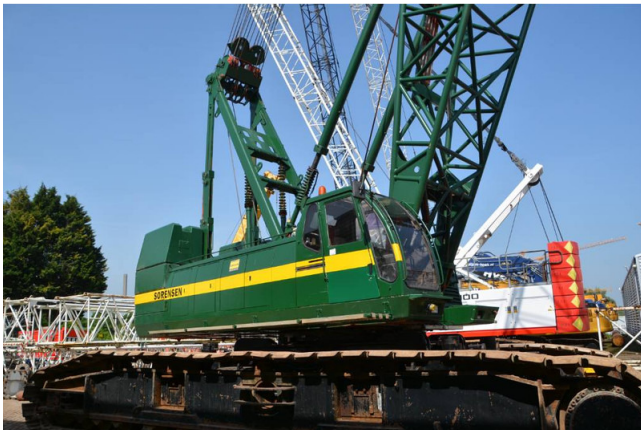


CRAWLER CRANE SUMITOMO SC1500-2

Price: Price on application ex-VAT



Contact details for Dealer

Branch: Netherlands, Rivierkade 3
4931 AA Geertruidenberg,
The Netherlands
Contact: Christiaan dekker

Stock Number: MAC1655147

Machine Location: Geertruidenberg, Netherlands

Machine Specifications

Product Name: Sumitomo SC 1500-2 Year of Manufacture: 1996 Operating Hours: 9668 Additional Options and Accessories: Hook blocks Remarks: New lifting computer Boom: 64 meter boom + aux sheave Fly Jib: 30 meter Mast: Live mast Counterweight: 30 ton extra counterweight, upgraded to 180 ton Hookblocks: 3 hookblocks , 150ton, 70 tons and 6 tons jibball Winches: Free-fall winches Rated Line Pull: 13.5 ton (28mm cables) Other Features: Fair lead Field of Application: Construction Mast Type: lattice Mast